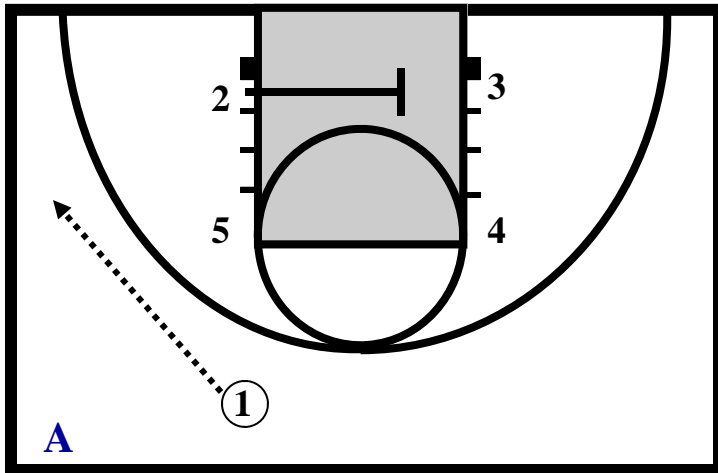
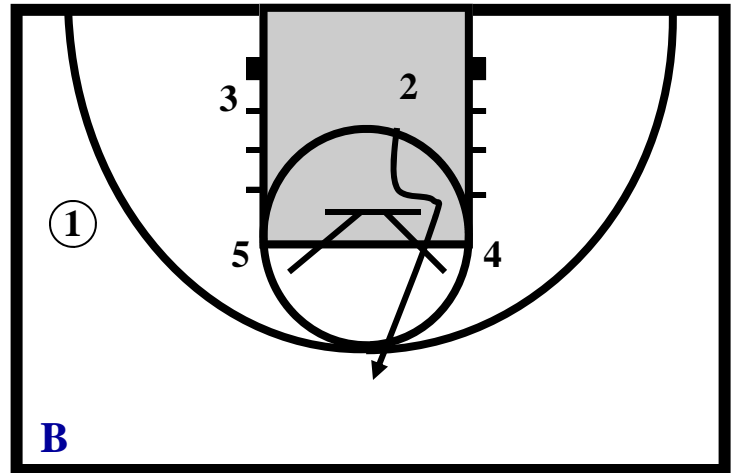


X AMERICA'S PLAY



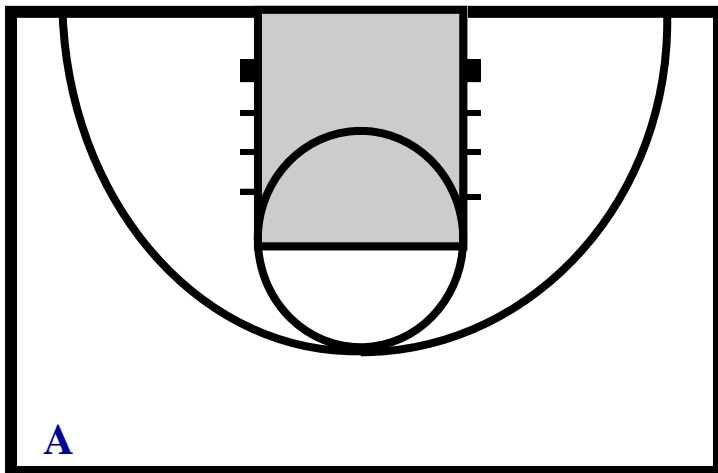
1 dribbles to the wing

2 cross screens block to block for 3

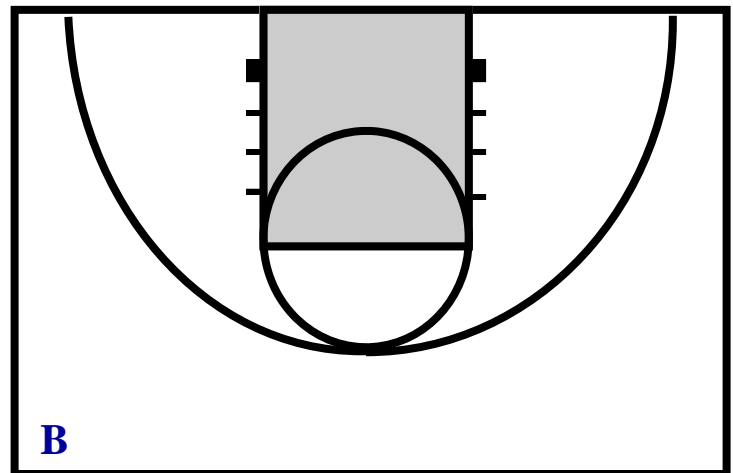


3 posts quickly as 2 goes off the 5/4 double screen...

** it's become popular recently for 2 to cut between the 5 and 4 in an elevator screen action



X1 tough on ball make entry pass tough
 X2 calls the screen and protects the basket as long as needed
 X3 gets to the screen, hit and peel, recover to chin on shoulder post defense
 X4 is in the middle of paint seeing both
 X5 is as low as needed to help or deny elbow if 5 player is more of threat than 3



X1 tough on ball make entry pass tough shaded toward baseline forcing action middle
 X2 recovers to cutter and goes second on the double screen action
 X3 maintains chin on shoulder on top side
 X4 is zoned up ready to take any slip action
 X5 steps out to take the top of the double ready to recover to player on the catch